

RIC - Seniors, Youth



Oil Pattern Distance: 39 Feet **Reverse Brush Drop:** 39 Feet **Oil Per Board:** 45 uL
Forward Oil Total: 11.97 mL **Reverse Oil Total:** 11.61 mL **Volume Oil Total:** 23.58 mL
Forward Boards Crossed: 266 Boards **Reverse Boards Crossed:** 258 Boards **Total Boards Crossed:** 524 Boards

	Start	Stop	Loads	Speed	Crossed	Start	End	Feet	T.Oil
1	2L	2R	2	14	74	0.0	1.9	1.9	3330
2	5L	5R	1	14	31	1.9	3.8	1.9	1395
3	7L	7R	2	14	54	3.8	7.7	3.9	2430
4	9L	9R	3	18	69	7.7	15.3	7.6	3105
5	11L	11R	2	18	38	15.3	20.4	5.1	1710
6	2L	2R	0	18	0	20.4	25.0	4.6	0
7	2L	2R	0	22	0	25.0	31.0	6.0	0
8	2L	2R	0	26	0	31.0	35.0	4.0	0
9	2L	2R	0	30	0	35.0	39.0	4.0	0

	Start	Stop	Loads	Speed	Crossed	Start	End	Feet	T.Oil
1	2L	2R	0	30	0	39.0	31.0	-8.0	0
2	11L	11R	1	22	19	31.0	27.9	-3.1	855
3	10L	10R	2	18	42	27.9	22.8	-5.1	1890
4	9L	9R	2	18	46	22.8	17.7	-5.1	2070
5	8L	8R	1	18	25	17.7	15.2	-2.5	1125
6	8L	8R	1	14	25	15.2	13.3	-1.9	1125
7	7L	7R	1	14	27	13.3	11.4	-1.9	1215
8	2L	2R	1	14	37	11.4	9.5	-1.9	1665
9	2L	2R	1	10	37	9.5	8.1	-1.4	1665
10	2L	2R	0	10	0	8.1	0.0	-8.1	0

Conditioner:
Type In or Select One

TransferType:
Type In or Select One

Forward



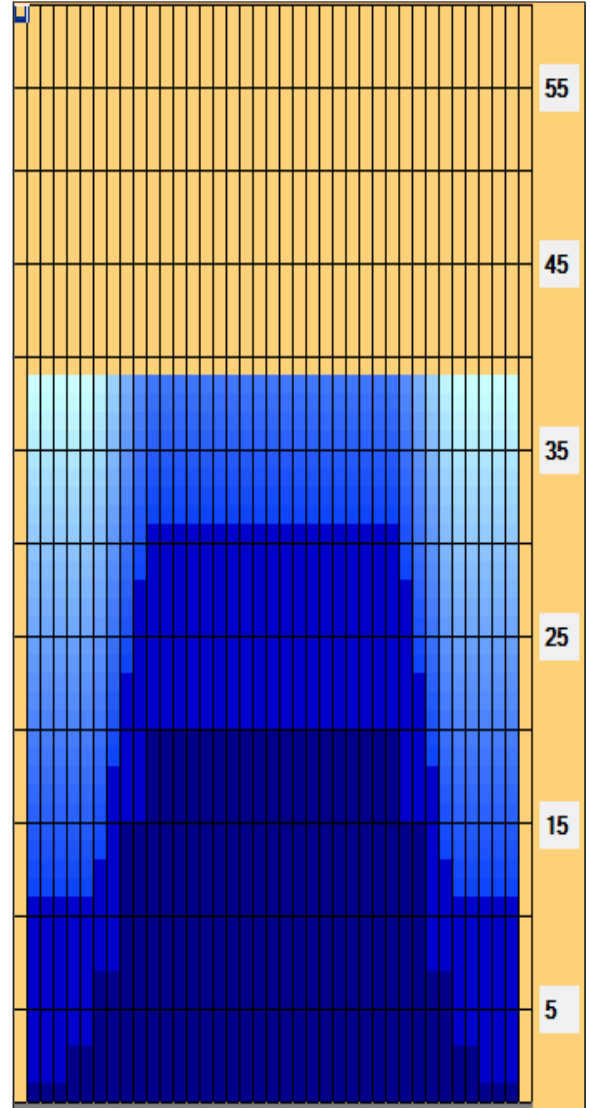
Reverse



Combined



Buff



Item	3L-7L:18L-18R	8L-12L:18L-18R	13L-17L:18L-18R	18L-18R:17R-13R	18L-18R:12R-8R	18L-18R:7R-3R
Description	Outside Track:Middle	Middle Track:Middle	Inside Track:Middle	Middle:Inside Track	Middle:Middle Track	Middle:Outside Track
Track Zone Ratio	3.85	1.22	1	1	1.22	3.85

